

hello
hello
hello



welcome

 **KOLONNADE**
SHOPPING CENTRE

012 548 1902 | info@kolonnadecentre.co.za



kolonnadecentre.co.za f @

- 1** Emergency Contact Details
- 2** Meet the Team
- 3** Trading Hours
- 3** Free WiFi
- 3** Kolonnade Gift Card
- 4** Free Marketing Opportunities
- 5** Paid Marketing Opportunities
- 5** Exhibitions
- 6** Our Shoppers
- 7** Mall Map



emergency

contact details



Security Control Room

012 548 1902 Extension 2



Sinoville Police Station

012 543 8800



Ambulance

082 911 (Medical Emergencies Only)



Netcare Montana Hospital

012 523 3000



Fire Brigade

012 310 6400 | 012 310 6300 | 10177



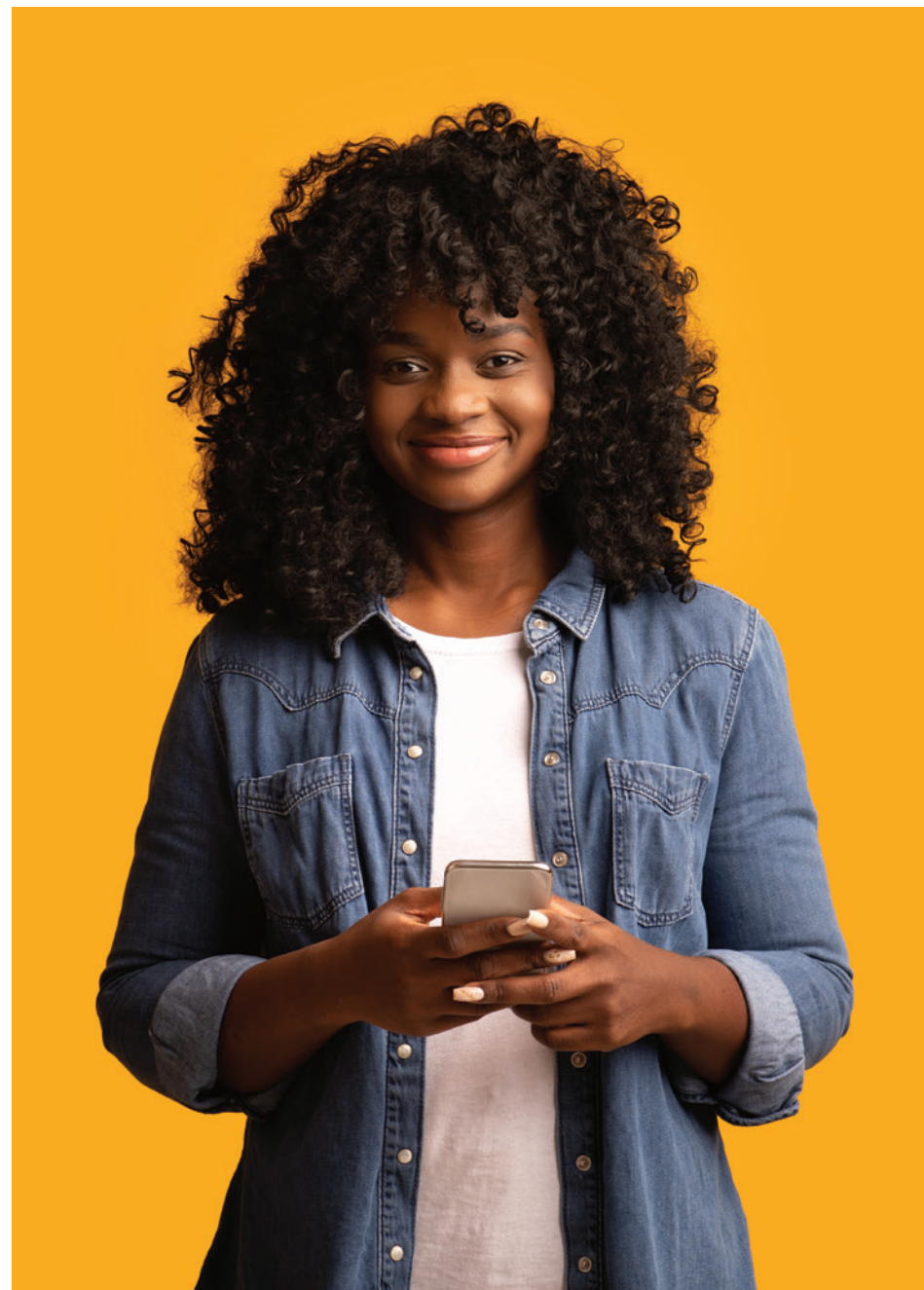
Parking Office

012 548 4530



Aircon Complaints

012 524 3399 | 083 452 4478
or email support@future-air.co.za



meet the team

General Manager

General Management

Lana Spies

lana.spies@excelleratejhi.com

Operations Manager

Operations and Service Level Agreements

Charl Claassen

charl.Claassen@excelleratejhi.com

Building Manager

General Centre Maintenance, Water/Roof Leaks,
Lighting in Common areas, Escalators/Lifts,
Electrical Problems (not tenant/store related),
Hot Work Permits, Tenant Inspections

Nico Botha

nico.botha@excelleratejhi.com

Portfolio Accountant

Financial and Creditors

Alvaro Becker

alvaro.becker@excelleratejhi.com

Leasing Administrator

Leasing Administration

Benjamin Lebowa

benjamin.lebowa@excelleratejhi.com

Debtors Administrator

Rental Collection

Mavis Lerm

mavis.lerm@excelleratejhi.com

Marketing Manager

Centre Marketing and Advertising,
Customer Complaints, Public Relations,
Website and Social Media Updates

Rosy Henderson

marketingkolonnade@word4word.co.za

Reception

Turnover Collection, General Queries,
Escalate Aircon Complaints, Parking

Mavis Lerm

mavis.lerm@excelleratejhi.com

Sales Manager

Exhibition Court Bookings, Gift Card Management,
Bookings for Posters and Pamphlet Distribution

Matilda Makgobathe

matilda@word4word.co.za

Client Info Counter

Gift Card Sales and General Centre Information

Zandile Mtshweni

Vanessa Baloyi

Bridgett Baloyi

gro@kolonnadecentre.co.za



free wifi

Kolonnade offers 10GB free WiFi per day. Connect to @SmartMall Free Wifi and register for access.

Processing Gift Card for purchase payment:

Treat the Kolonnade Gift Card as a regular non-pin-based credit card. When a customer makes a purchase at your store with a Kolonnade Gift Card, swipe the gift card through your bank point-of-sale device as you would a regular bank card.

Process:

1. Swipe the card on the Point of Sale (POS) device.
2. Enter the last 4 digits of the card or the random card digits as prompted by your POS device.
3. Note, that the Kolonnade Gift Card does not require a shopper PIN.
4. Choose the "sale" or "purchase" option.
5. Enter the amount, if the transaction is approved, let the customer sign the receipt.
6. If the transaction is declined, the cardholder must contact the Tutuka call centre, the number is printed on the reverse side of the gift card. The Tutuka call centre number is: 011 803 3118

Note: Cardholders can SMS their card number to 34246 and their balance will be SMS'ed back to them or swipe it at the Info Counter.



hello *gift cards*

Credit/Debit purchases available from the Info Counter.

Bulk or EFT purchases available from the Sales Manager.

Maximum value: R5 000 per card.

Valid at all Kolonnade Stores.



TRADING HOURS: MON - FRI 9AM - 7PM | SAT 9AM - 6PM | SUN 9AM - 4PM | PH 9AM - 5PM

free marketing opportunities

→ Pamphlets

By prior arrangement with the Sales Manager, batches of pamphlets can be left at the Info Counter. To book an entrance for distribution, contact the Sales Manager at least one week in advance. Any pamphlets handed out without permission will be stopped by security. Please be respectful and mindful of shoppers and do not be overbearing.

→ A1 Poster Frames

Contact the Sales Manager to book your A1 [portrait] poster frames throughout the Centre. This space is offered for at least one week, extended time will be subject to availability. Retailers are offered 10 spaces and printed paper posters must be delivered to the Marketing Office for the department on or before Monday mornings.

→ Advertising on the E-newsletter

E-newsletter are sent at random dates. Please contact the Marketing Manager for the next date and availability. Artwork required in Jpeg format, with the following sizes available:

- 500 x 213px landscape
- 213 x 469px portrait
- 213 x 213px square

The email database consists of over 5 000 subscribers and grows with each campaign.



→ Facebook and Instagram

E-mail any special, competition or event hosted in your store to the Marketing Manager for posting to the Facebook and Instagram pages. Like our Facebook page and follow us on Instagram and remain up to date with events and competitions taking place at Kolonnade.

- 1080 x 1080px for Instagram & Facebook posts

→ Centre Website

Ensure that your store listing is correct and filed under the appropriate department by supplying the Marketing Manager with your contact details, description and image that can be used.

paid marketing opportunities

→ Primall Media

Kelebogile Monthsho

072 376 7072

kelebogileM@primeoutdoor.co.za

Request a quote on any of the following options for mall advertising:

- Escalator Branding
- Elevator Branding
- Electronic Directory Boards
- Boom Gate Sleeves:

→ SMS to Centre Database

The Kolonnade database growth is continuous, and the number will expand with each event. We need at least one week's notice to send a SMS.

- The cost per SMS is subject to change, please contact the Marketing Manager for a quote.
- Your SMS copy can consist of 136 characters max. This includes spaces and the word "KOLONNADE" as well as "SMS STOP TO OPT OUT".
- You will be invoiced once the order is confirmed, and payment needs to be received before the message is sent.
- Kolonnade reserves the right to limit the frequency of messages sent per month to avoid overwhelming customers with too many messages resulting in them unsubscribing.



→ Exhibitions

Contact the Sales Manager to arrange your booking.

[CLICK HERE TO VIEW COURT SPACES & COSTS](#)

Kolonnade stores receive a 25% Retailer Discount on the prices above.
Bookings are subject to availability

our shoppers

demographics & store categories



Existing Gross lettable
area of 76 997.5m²



70% of existing Tenants
are National Retailers



Average monthly
footcount of 861 000



Majority of our shoppers
are in the LSM 5-10 bracket

We offer cater to the following categories

ADVENTURE | OUTDOOR | SPORT & TRAVEL
BANKS & FINANCIAL SERVICES
DEPARTMENT & SPECIALITY STORES
ENTERTAINMENT
EYE CARE & MEDICAL
FASHION
FAST FOOD | RESTAURANTS | DELICATESSEN & SWEETS
GIFTS | CARDS | TOYS & HOBBIES
HAIR & BEAUTY
HOUSE & HOME
JEWELLERS
PETS
PHOTOGRAPHY | SOUND & ELECTRONICS
SERVICES
SHOES
STATIONERY | BOOKS & MUSIC
TECHNOLOGY



 **KOLONNADE**
SHOPPING CENTRE

Checkers

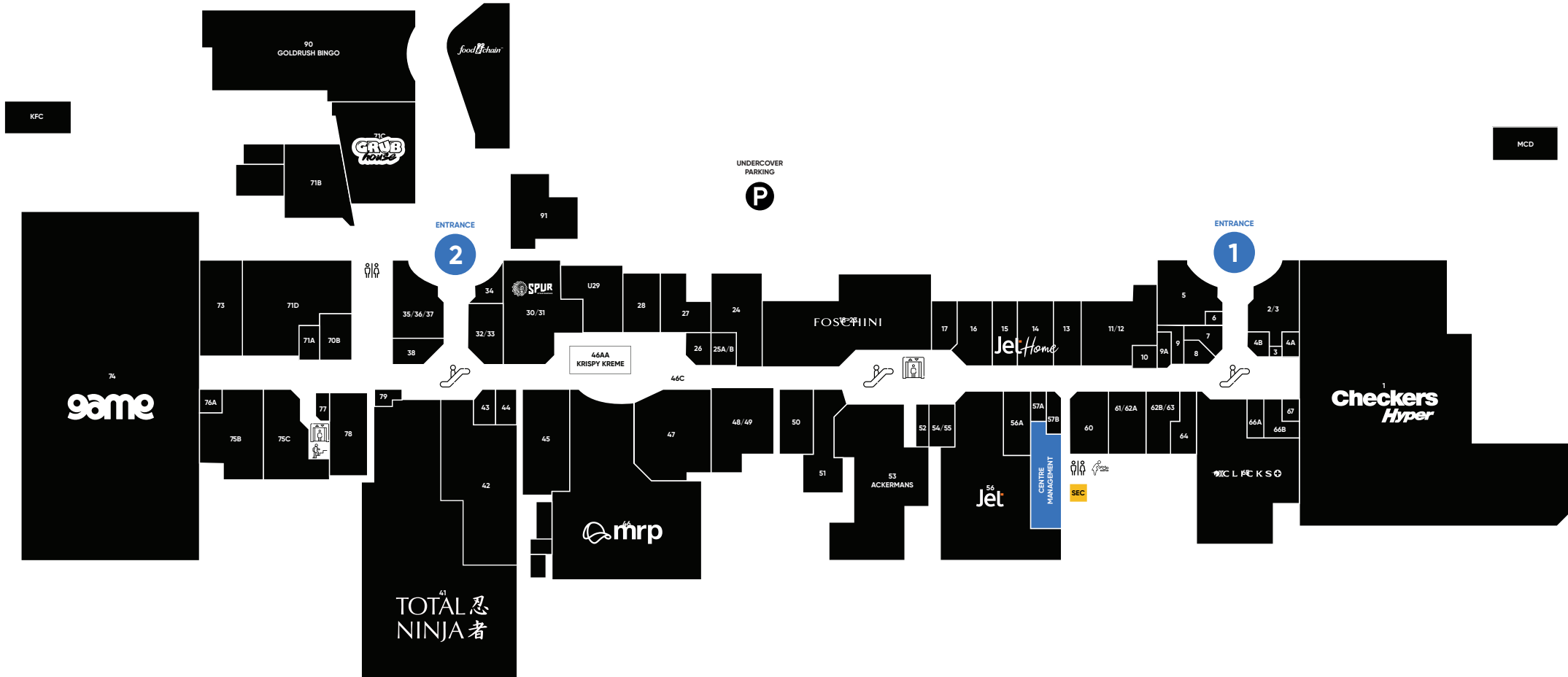


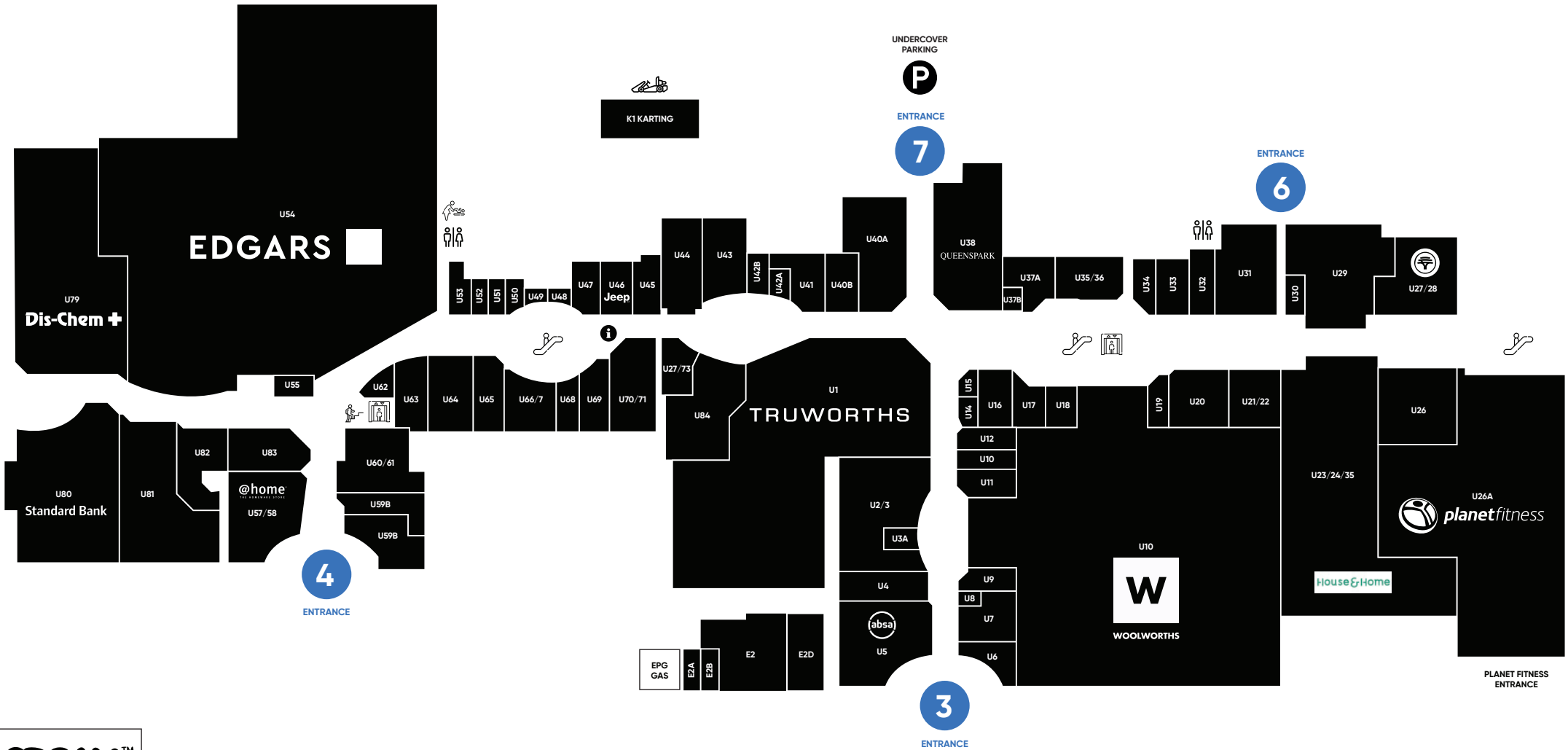
game

Dis-Chem +

6

mall map





KOLONNADE
SHOPPING CENTRE

Upper Level 8